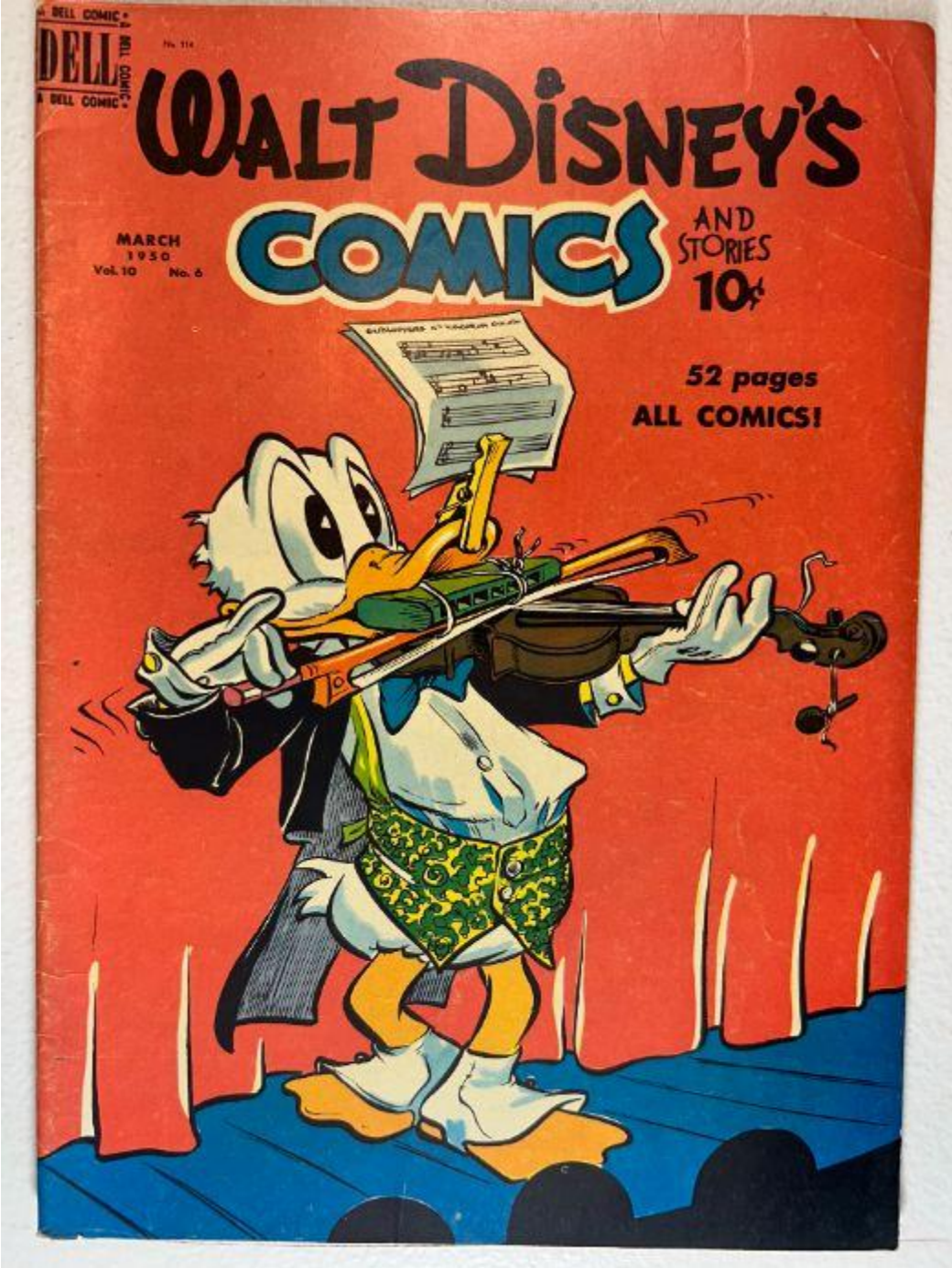


**Walt Disney's Comics and Stories – Vol. 10 No. 6
(March 1950)**

Evaluation Date: April 5, 2026



SUMMARY OF OBSERVATIONS

This copy exhibits strong overall presentation with vivid front-cover color and clean interior artwork; however, inspection of each individual photograph reveals **multiple distinct defects** that must be documented explicitly.

Identified defects include:

- **Localized paper stress and abrasion along the lower spine area at both staple locations**, visible as compressed fibers and ink surface cracking.
- **A shallow but visible separation at the lower spine wrap**, where the cover paper shows slight lifting at the staple line without full detachment.
- **Moderate corner rounding along lower corners of the covers**, with softened paper profile.
- **Uniform interior page toning**, darker at edges than centers.
- **Minor edge waviness** along several interior page margins.

No torn pages, missing material, or detached centerfold are visible in the provided images.

Only after accounting for these defects can the book's strong color and overall visual appeal be noted.

FRONT COVER — OBSERVATIONS

Walt Disney's Comics and Stories – Vol. 10 No. 6 (March 1950)

Photo Condition & Quality:

High-resolution, evenly lit image. Color fields, ink boundaries, edges, corners, and spine area are clearly visible.

Observations:

- Red background field is **bold and well saturated**, with even color density across the surface.
- Black title lettering and character outlines remain sharp with no ink bleed.
- Along the **lower spine edge**, directly at and extending horizontally from the lower staple:
 - Paper exhibits **surface abrasion and compression**, visible as flattened fibers and a dullened ink layer.
 - A **short, shallow lift or separation of the cover paper** is visible at the spine fold, confined to the immediate staple zone and not extending into the cover field.
- The lower front cover edge near the spine shows **edge roughening**, with small irregularities in the cut edge but no full tear.

- Bottom edge away from the spine shows **light friction wear** with softened edge definition.
- Corners:
 - Lower corners show **moderate rounding** with loss of sharp angle.
 - Upper corners retain more defined points with only light softening.
- No writing, stamps, or markings observed.

Overall Impression:

Front cover retains excellent color and artwork clarity, with **structural wear concentrated at the lower spine and staple region.**

BACK COVER — OBSERVATIONS

Walt Disney's Comics and Stories – Vol. 10 No. 6 (March 1950)

Photo Condition & Quality:

Image is evenly lit and fully framed, showing the full surface and all corners.

Observations:

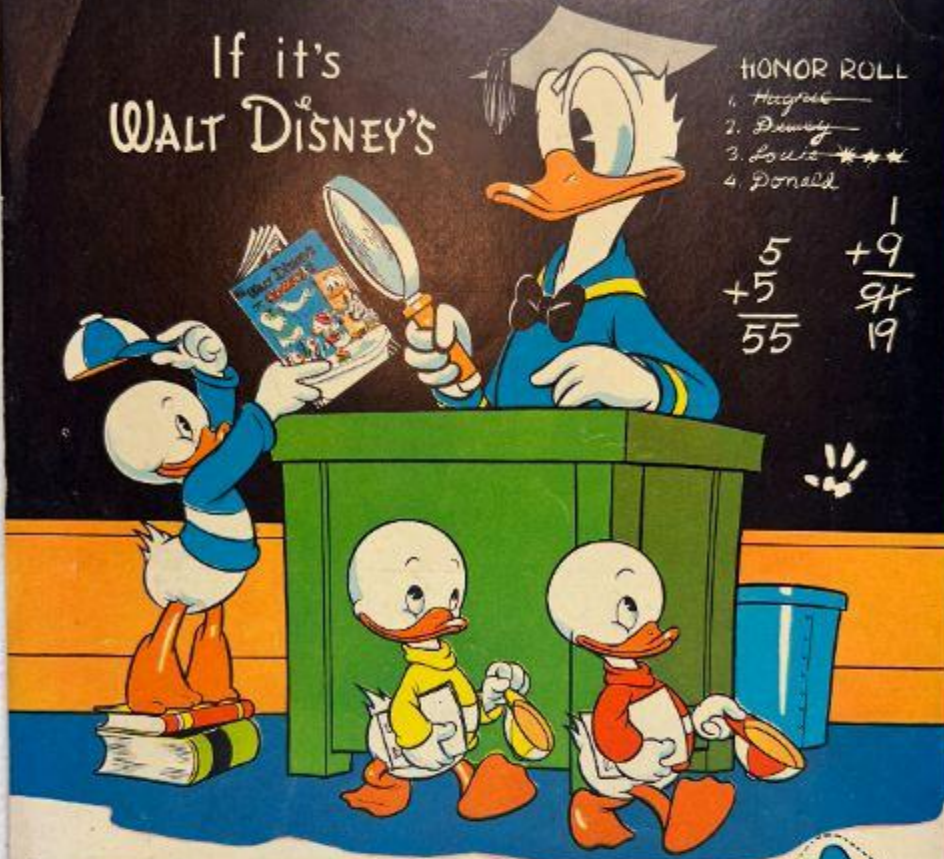
- Back cover paper tone is **uniform tan/light brown**, consistent with age.
- No moisture stains, tide marks, or spotting observed.
- Along the **lower spine edge**, paper mirrors the front cover condition with **localized compression and abrasion**, though less pronounced.
- Perimeter edges show **light handling wear**, most evident along the bottom edge.
- Corners show **gentle rounding**, more noticeable at the bottom corners.
- Printed subscription advertisement remains crisp and legible.

Overall Impression:

Back cover is intact with **localized lower-spine stress and general light handling wear.**

YOU CAN BE SURE IT'S APPROVED!

If it's
WALT DISNEY'S



HONOR ROLL

1. Huey
2. Dewey
3. Louie ***
4. Donald

$$\begin{array}{r}
 5 \\
 +5 \\
 \hline
 55
 \end{array}
 \qquad
 \begin{array}{r}
 1 \\
 +9 \\
 \hline
 94 \\
 19
 \end{array}$$

Subscribe now to the comic that is always NEW, always TOPS in comic entertainment. Approved by parents and educators everywhere!

Suitable for everyone

ages 3 to 90

FREE! with each subscription we will include full color iron-on appliques of your favorite Disney characters! Act NOW as this offer is limited.

Subscription rates

One-year (12 big issues), plus appliques	\$1.00
Two-year (24 big issues), plus appliques	1.75
Three-year (36 big issues), plus appliques	2.50
Five-year (60 big issues), plus appliques	4.00

Use handy application blank on opposite page for your subscription.



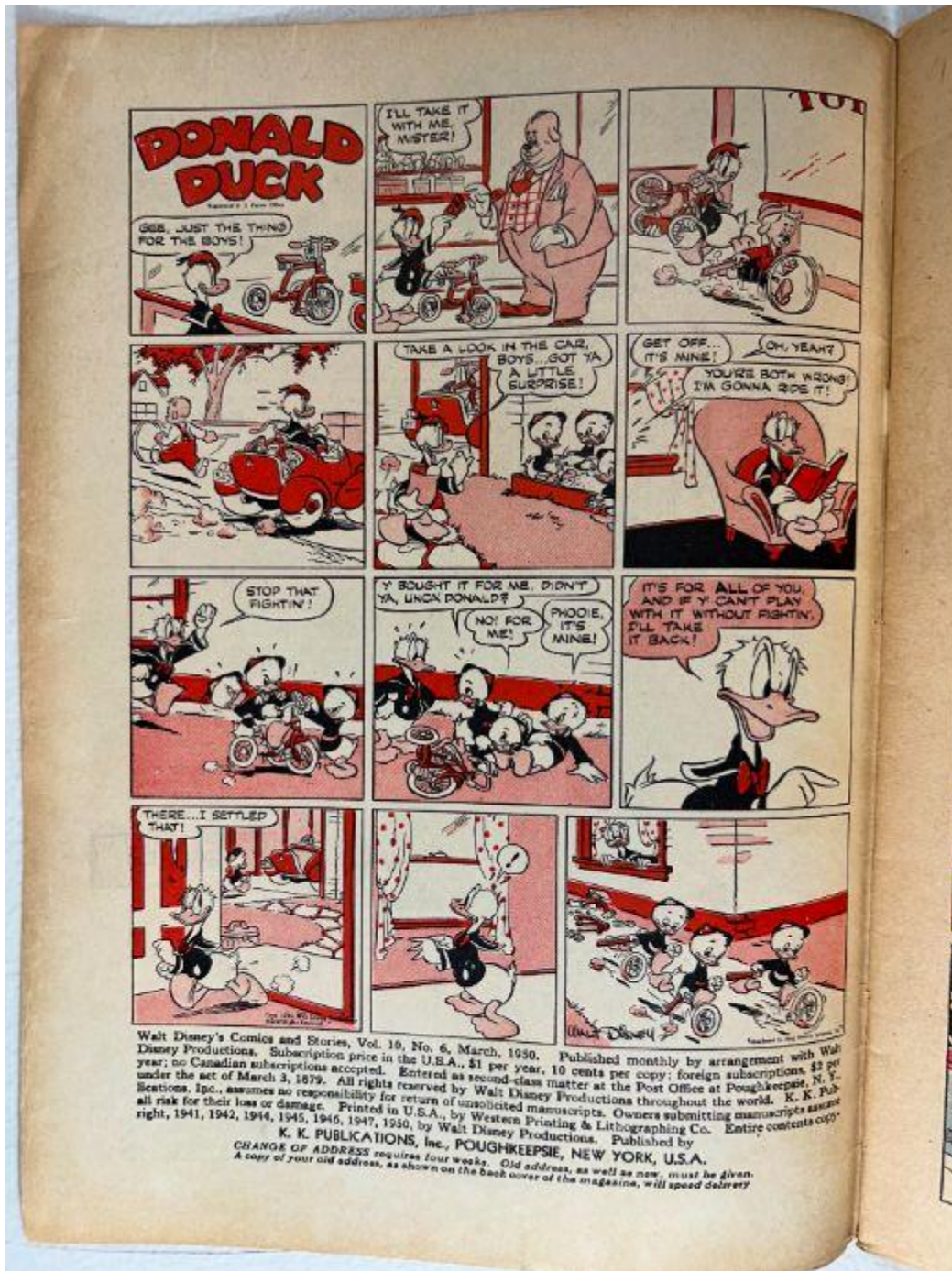
ACTUAL SIZE
OF DISNEY
APPLIQUE

INSIDE FRONT COVER — OBSERVATIONS

Walt Disney's Comics and Stories – Vol. 10 No. 6 (March 1950)

Photo Condition & Quality:

Clear, straight-on image with full margins visible.



Observations:

- Paper color is **cream**, lighter than the back cover.
- Margins are intact with no tears or folds.
- No writing, stamps, or pencil marks observed.
- **Indicia is present and legible**, confirming: *Walt Disney's Comics and Stories, Vol. 10 No. 6, March 1950.*

Overall Impression:

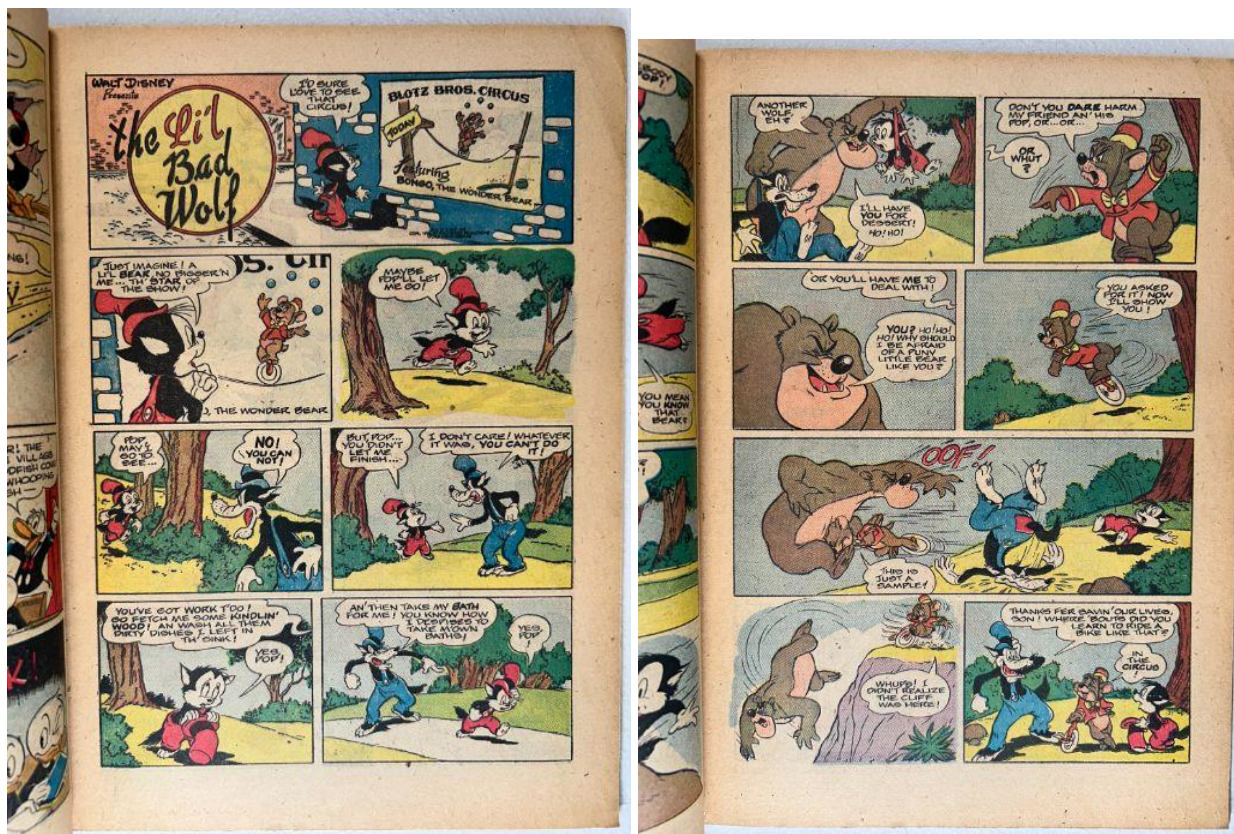
Inside front cover is **clean and structurally sound**.

INTERIOR PAGES — OBSERVATIONS

Walt Disney's Comics and Stories – Vol. 10 No. 6 (March 1950)

Photo Condition & Quality:

Multiple interior pages photographed with good clarity; panels, margins, and gutters are clearly visible.





Page Color: cream to light tan

Observations:

- Pages exhibit **uniform age-related toning**, slightly darker toward outer margins.
- Color artwork remains vibrant with no visible ink fading or bleed.
- Several margins show **minor edge waviness**, appearing as shallow undulations rather than creases or tears.
- Page corners show **light softening**, consistent across photographed pages.
- No missing pieces, clipped corners, or full-thickness tears observed.
- Gutter areas remain tight with no splitting.

Overall Impression:

Interior pages are **complete, readable, and evenly aged**, with minor handling effects.

CENTERFOLD — OBSERVATIONS

Walt Disney's Comics and Stories – Vol. 10 No. 6 (March 1950)

Photo Condition & Quality:

Centerfold image clearly shows both pages and staple attachments.



Observations:

- Centerfold remains **attached at both staples**.
- Fold line shows **light compression flattening**, uniform from top to bottom.
- No tearing, splitting, or staple pull-through observed along the fold.

Overall Impression:

Centerfold is **secure and structurally intact**.

SPINE — OBSERVATIONS

Walt Disney's Comics and Stories – Vol. 10 No. 6 (March 1950)

Photo Condition & Quality:

Side-profile image shows full spine alignment.



Observations:

- Spine is **generally straight**, with no evident roll.
- **Localized wear at the lower spine**, including compressed fibers and minor surface abrasion at the staple line.
- No full spine split observed.

Overall Impression:

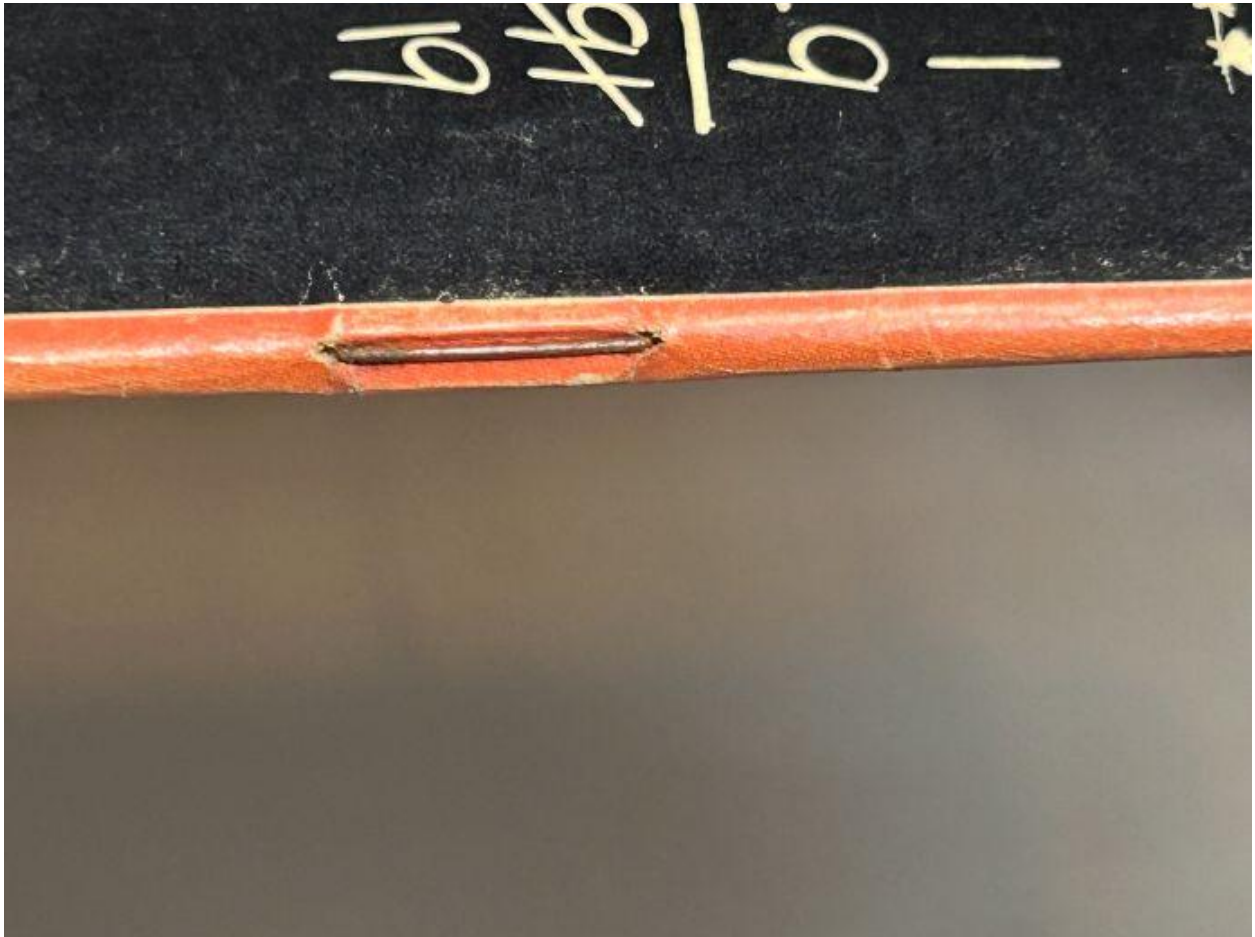
Spine integrity is good, with **stress isolated to the lower staple region**.

UPPER STAPLE — OBSERVATIONS

Walt Disney's Comics and Stories – Vol. 10 No. 6 (March 1950)

Photo Condition & Quality:

Macro image with clear focus on staple and surrounding paper.



Observations:

- Upper staple is present and firmly seated.
- Surrounding paper shows **minor compression**, visible as flattened fibers immediately adjacent to staple legs.
- No rust migration or tearing observed.

Overall Impression:

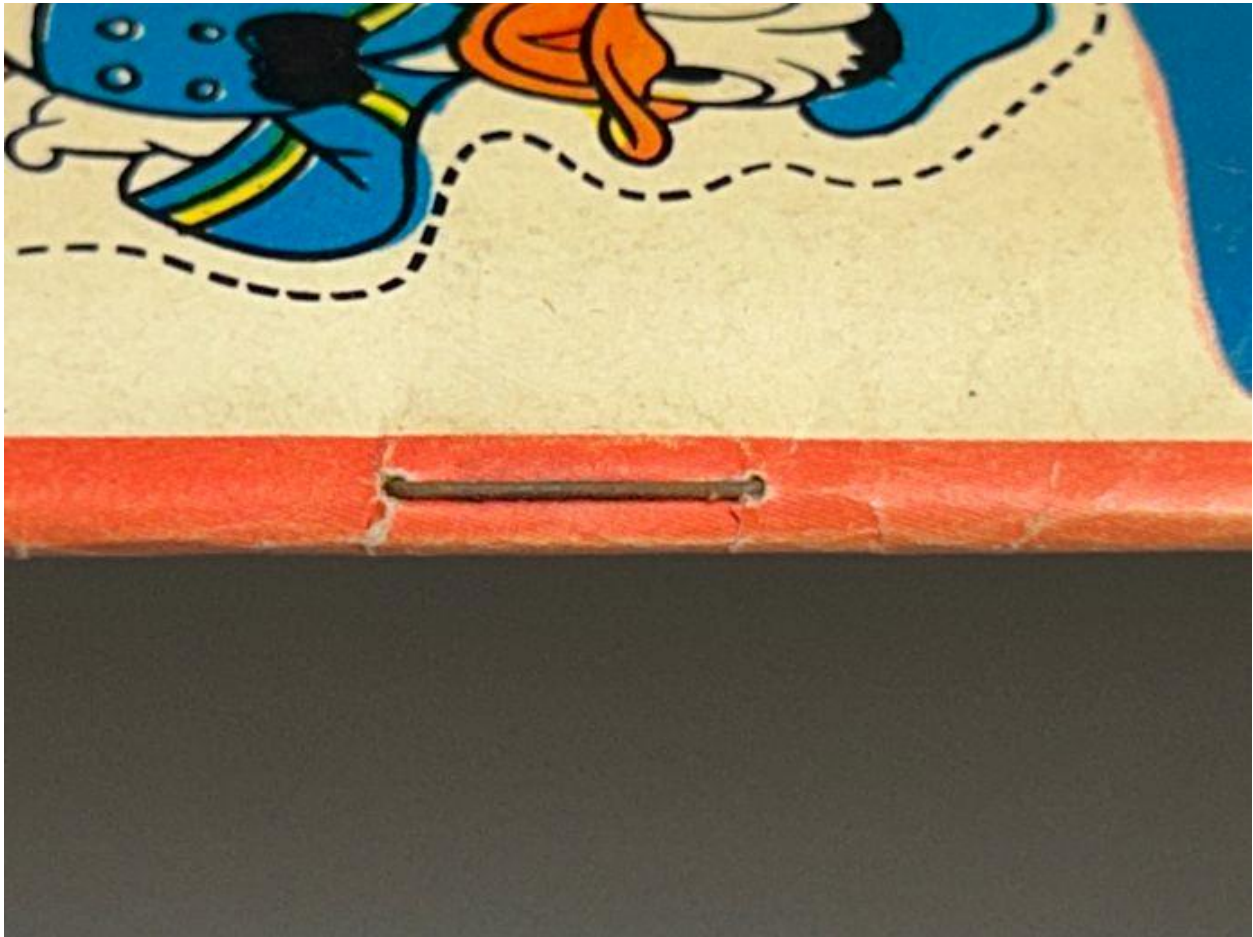
Upper staple is **secure with minimal paper disturbance**.

LOWER STAPLE — OBSERVATIONS

Walt Disney's Comics and Stories – Vol. 10 No. 6 (March 1950)

Photo Condition & Quality:

Macro image clearly shows staple and adjacent spine paper.



Observations:

- Lower staple remains embedded.
- Surrounding paper exhibits **more pronounced compression and abrasion** than the upper staple.
- A **shallow separation at the spine fold** is visible directly at the staple location, without complete detachment or pull-through.

Overall Impression:

Lower staple is intact, with **concentrated paper stress at the spine fold**.

BRITTLENESS TEST — OBSERVATIONS

visual only

Photo Condition & Quality:

Single interior page lifted with sufficient lighting.



Observations:

- Page bends in a smooth arc.
- No visible fiber cracking, flaking, or fragmentation observed.

Overall Impression:

Tested page demonstrates **retained flexibility**.